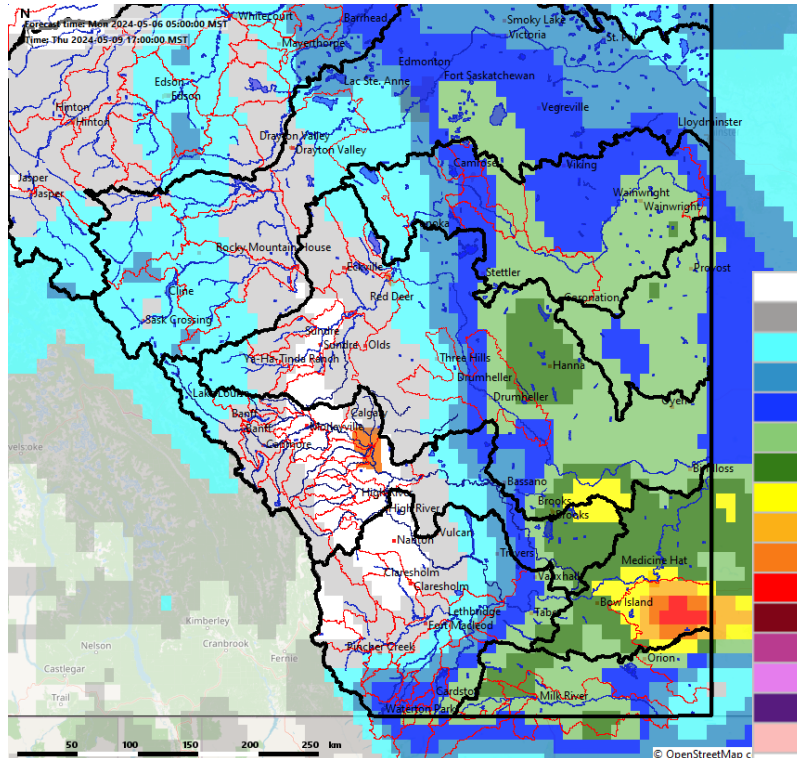
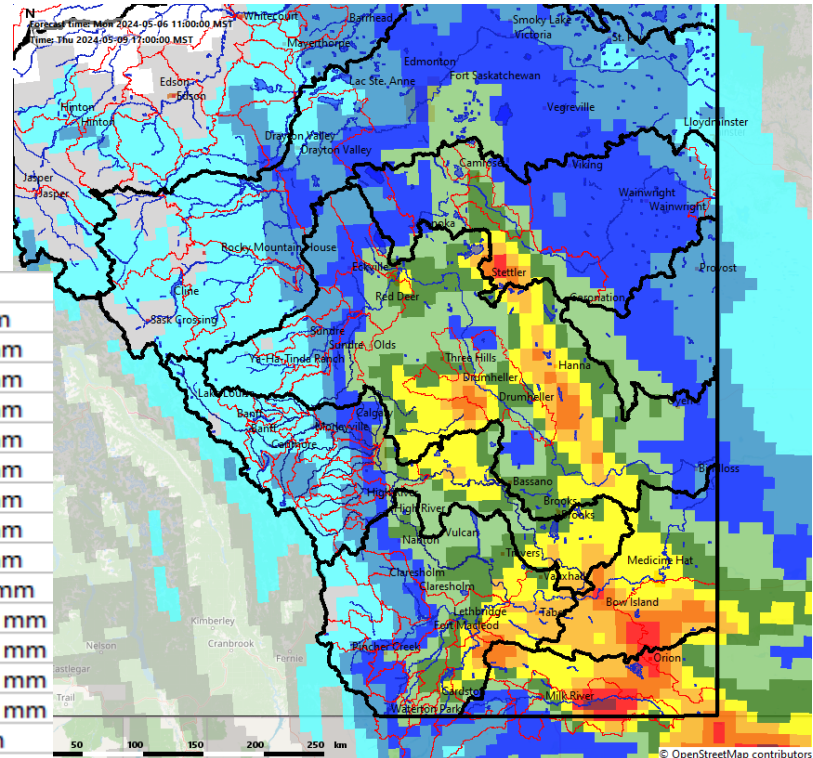


# Weather Forecast

## NAM

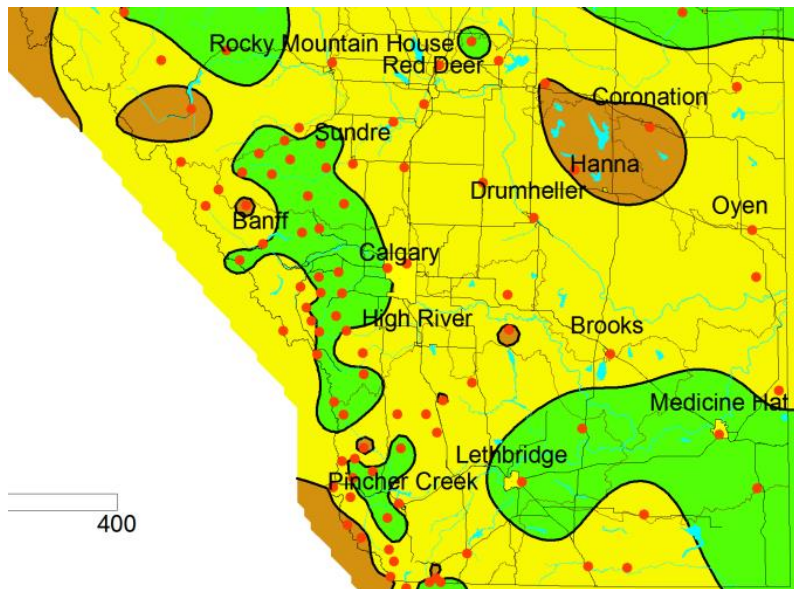


## RDPS

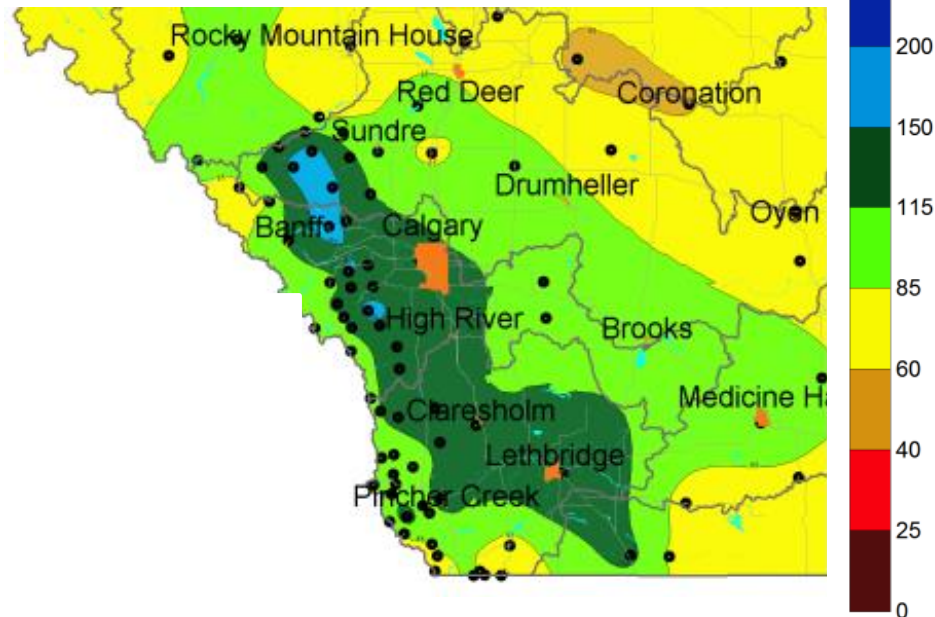


# Precipitation as Percent of 20 Year Normal

2023 Winter  
(1 Nov – 1 May)



2024 Winter  
(1 Nov – 1 May)



# 2024 Water Supply Outlook

- Mountain Runoff Forecasts  
(natural volumes for May to September)



			May - September			
			Volume Forecast for May 1 to September 30, 2024			
	Volume dam <sup>3</sup>	Volume as % Avg	Prob Range as % Avg	Potential Min as % Avg	99 yr Forecast Ranking (low to high)	Description
Bow River at Banff	886,000	92	88-97	85	23	Below Average
Lake Minnewanka Inflow	152,000	93	84-103	75	36	Average
Spray River near Banff	325,000	97	89-105	82	37	Average
Kananaskis River	339,000	95	84-108	74	32	Average
Bow River at Calgary	2,023,000	95	89-100	84	32	Average
Elbow River	160,000	88	75-100	64	39	Average
Highwood River	450,000	89	71-107	55	39	Average

There is: a 50% chance that the actual natural flow will fall within the probable range given; a 25% chance that the actual flow will be less than the lower bound of the probable range given; and a 10% chance that the actual natural flow will be less than the potential minimum.

Potential Min Volume (dam<sup>3</sup>) = Volume (dam<sup>3</sup>) ÷ Volume as % Avg x Potential Min as % Avg

- Average is calculated for the March 1 to September 30 period from 1981 to 2009. Ranking is based on the period 1912 to 2009 (99 yrs)

- The forecast shown is the March to September forecast minus the recorded volume to date

- Actual day to day streamflow conditions may vary throughout the season as a result of the effects of streamflow diversion and reservoir storage.

Alberta

# Questions

Website:

<https://rivers.alberta.ca/>

**Forecaster on Duty:**

**[RFC.Forecaster@gov.ab.ca](mailto:RFC.Forecaster@gov.ab.ca)**

Me:

[Nathalie.Brunet@gov.ab.ca](mailto:Nathalie.Brunet@gov.ab.ca)



Data Inquiries:

[RFC.Operations@gov.ab.ca](mailto:RFC.Operations@gov.ab.ca)